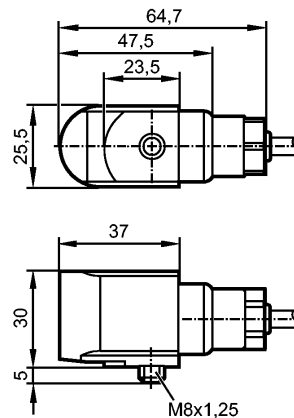


VSP02A

VIBRATION SENSOR ATEX

Diagnostic systems


CE
Product characteristics

Accelerometer

VSP

Cable

ATEX approval

group 1, M1

For connection to VSExxx type external diagnostic electronics via safety barrier

Electrical data

Electrical design	Connection to intrinsically safe supply isolators (Ex ia)	
Operating voltage [V]	10...12 DC	
Current consumption [mA]	0.5...8	
Electrical isolation [V]	500	
Protection class	III	
Reverse polarity protection	yes	

Outputs

Short-circuit protection	yes
Overload protection	yes
Max. load [Ω]	200


Measuring / setting range

Sensitivity [mV/g]	100
Electrical noise [mg]	0.1
Transverse sensitivity [%]	< 5
Measuring range [g]	± 50
Frequency range [Hz]	2...10000
Minimum measuring time [s]	2

Environment

Ambient temperature [$^{\circ}\text{C}$]	-55...90
Protection	IP 68; for 1D applications: IP65

Tests / approvals

Approval	Baseefa12ATEX0247 IECEX BAS 12.0132
Marking of the unit	 I M1 Ex ia I Ma (-55 $^{\circ}\text{C}$ < Ta < +90 $^{\circ}\text{C}$)
EMC	EN 61000-6-2 2005

VSP02A

VIBRATION SENSOR ATEX

Diagnostic systems

	EN 61000-6-4	2007
Shock resistance	5000 g	
Mechanical data		
Number of measurement axes	1	
Mechanical overload resistance [g]	5000	
Housing materials	housing: stainless steel	
Type of mounting	M8 x 1.25	
Weight [kg]	0.678	
Electrical connection		
Connection	PUR cable / 10 m	
Wiring		
white: Sensor supply / signal		
black: 0 V		
screen: drain wire		
Accessories		
Accessories (optional)	Safety barrier ZB0633	
Remarks		
Pack quantity [piece]	1	