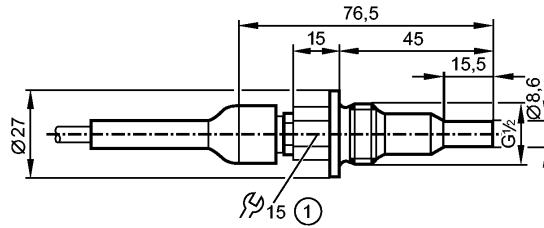


**SF3410**

SFR12XBK/6M

Flow sensors



1: tightening torque max. 30 Nm

**Product characteristics**

Flow sensor for connection to evaluation units

Threaded type

Cable

Process connection: G 1/2 A

**Application**

Application Aggressive liquid media

Pressure rating [bar] 30

Medium temperature [°C] 5...70

**Electrical data**

Connection to control monitor VS3000

**Measuring / setting range**

Liquids

Setting range [cm/s] 3...60

Greatest sensitivity [cm/s] 3...40

Gases

Setting range [cm/s] -

Greatest sensitivity [cm/s] -

**Accuracy / deviations**

Max. temperature gradient of medium [K/min] 7

**Reaction times**

Response time [s] 2...20

**Environment**

Protection IP 67

**Tests / approvals**

Shock resistance DIN IEC 68-2-27: 40 g (11 ms)

Vibration resistance DIN IEC 68-2-6: 10 g (55...2000 Hz)

MTTF [Years] 8213

**Mechanical data**

Process connection G 1/2 A

Materials (wetted parts) ceramics (99.7 % Al2 O3)

Housing materials ceramics (99.7 % Al2 O3)

Probe length L [mm] 30

Installation length EL [mm] 45

Weight [kg] 0.386

**Electrical connection**

Connection PUR / PVC cable / 6 m; 5 x 0.34 mm<sup>2</sup>

Max. cable length [m] 100 (5 x 0.5mm<sup>2</sup>)

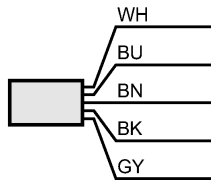
**SF3410**

SFR12XBK/6M

**Wiring**

Core colors

- BN brown
- BU blue
- BK black
- WH white
- GY grey



**Accessories**

Accessories (included)	packing washer PTFE
------------------------	---------------------

**Remarks**

Remarks	For sealing use the supplied PTFE packing washer.
---------	---

Pack quantity	[piece]	1
---------------	---------	---