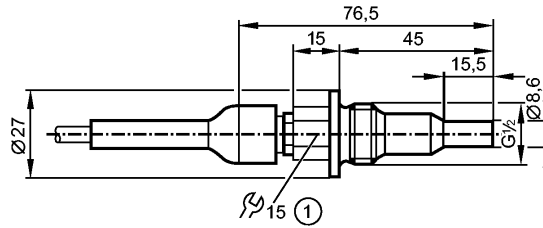


**SF323A**

SFR12XBK/2G /6M

Flow sensors



1: tightening torque max. 30 Nm



**Product characteristics**

Flow sensor for connection to evaluation units

Threaded type

Cable

Process connection: G 1/2 A

Ambient temperature -20...70 °C

ATEX approval

Group II, category 2G

**Application**

Application Aggressive liquid media

Pressure rating [bar] 30

Medium temperature [°C] 5...70

**Electrical data**

Connection to control monitor VS2000 Exi (PTB 01 ATEX 2075)

**Measuring / setting range**

Liquids

Setting range [cm/s] 3...60

Greatest sensitivity [cm/s] 3...40

Gases

Setting range [cm/s] -

Greatest sensitivity [cm/s] -

**Accuracy / deviations**

Max. temperature gradient of medium [K/min] 7

**Reaction times**

Response time [s] 2...20

**Environment**

Protection IP 67

**Tests / approvals**

Approval DMT 03 ATEX E091  
IECEX BVS 06.0007

Marking of the unit  II 2G Ex ia IIC T4 Gb

Shock resistance DIN IEC 68-2-27: 40 g (11 ms)

Vibration resistance DIN IEC 68-2-6: 10 g (55...2000 Hz)

MTTF [Years] 7927

**Safety classification**

Internal capacitance [nF] 1.2

## SF323A

SFR12XBK/2G /6M

Flow sensors

Internal inductance	[μH]	6
Temperature class		T4

### Mechanical data

Process connection		G ½ A
Materials (wetted parts)		ceramics (99.7 % Al2 O3)
Housing materials		ceramics (99.7 % Al2 O3)
Probe length L	[mm]	30
Installation length EL	[mm]	45
Weight	[kg]	0.356

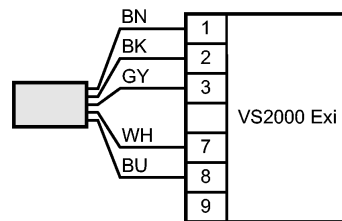
### Electrical connection

Connection		TPE-S cable / 6 m; 5 x 0.34 mm <sup>2</sup>
Max. cable length	[m]	100 (5 x 0.5mm <sup>2</sup> )

### Wiring

Core colors

BN	brown
BU	blue
BK	black
WH	white
GY	grey



### Remarks

Remarks	In principle, the type test according to 94/9/EC (ATEX) only takes atmospheric conditions (0.8...1.1 bar) into account. For pressures outside this range use must be assessed and approved by the user. Adhere to the operating instructions and the type test certificate.
---------	---

Pack quantity	[piece]	1
---------------	---------	---