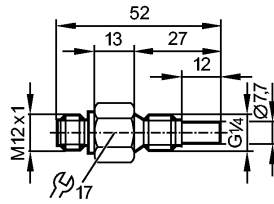


SF220A

SFR14ABB/US/2G

Flow sensors



Product characteristics

Flow sensor for connection to evaluation units

Threaded type

Quick disconnect

Process connection: G 1/4 A

Ambient temperature -20...70 °C

ATEX approval

Group II, category 2G

Application

Application: liquids and gases

Pressure rating [bar]: 30

Medium temperature [°C]: -20...70

Electrical data

Connection to control monitor: VS2000 Exi (PTB 01 ATEX 2075)

Measuring / setting range

Liquids

Setting range [cm/s]: 3...300

Greatest sensitivity [cm/s]: 3...60

Gases

Setting range [cm/s]: 200...2000

Greatest sensitivity [cm/s]: 200...800

Accuracy / deviations

Max. temperature gradient of medium [K/min]: 15

Reaction times

Response time [s]: 1...10

Environment

Protection: IP 67

Tests / approvals

Approval: DMT 03 ATEX E091
IECEX BVS 06.0007

Marking of the unit: Ex II 2G Ex ia IIC T4 Gb

Shock resistance: DIN IEC 68-2-27: 40 g (11 ms)

Vibration resistance: DIN IEC 68-2-6: 10 g (55...2000 Hz)

MTTF [Years]: 8648

Safety classification

Internal capacitance [nF]: 0.4

Internal inductance [µH]: 2

SF220A

SFR14ABB/US/2G

Flow sensors

Temperature class	T4
-------------------	----

Mechanical data

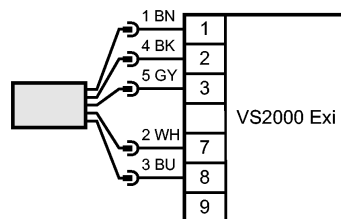
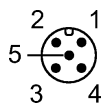
Process connection	G ¼ A
Materials (wetted parts)	stainless steel 316L / 1.4404
Housing materials	stainless steel 316L / 1.4404
Probe length L [mm]	12
Installation length EL [mm]	27
Weight [kg]	0.107

Electrical connection

Connection	M12 connector
Max. cable length [m]	100 (5 x 0.5mm²)

Wiring

- Core colors
- BN brown
 - BU blue
 - BK black
 - WH white
 - GY grey



Remarks

Remarks	In principle, the type test according to 94/9/EC (ATEX) only takes atmospheric conditions (0.8...1.1 bar) into account. For pressures outside this range use must be assessed and approved by the user. Adhere to the operating instructions and the type test certificate.
---------	---

Pack quantity [piece]	1
-----------------------	---