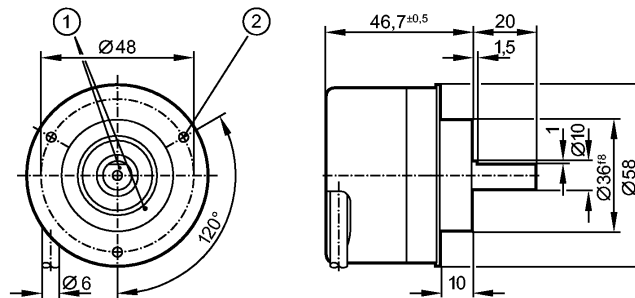


## RV6138

RV-1000-I24/L6

Encoders

Article discontinued as of 31.March 2016



1: reference mark  
2: M3 5 mm deep



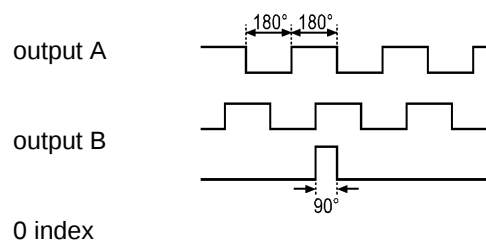
### Product characteristics

Solid shaft encoder  
HTL-output 50 mA, short-circuit protected, < 1 min  
Cable  
6 signals  
Resolution 1000

### Electrical data

Operating voltage [V]	10...30 DC
Current consumption [mA]	< 150
Phase difference A und B [°]	90
Switching frequency [kHz]	300

### Pulse diagram



### Outputs

Output function	HTL-output 50 mA, short-circuit protected, < 1 min
-----------------	--

### Measuring / setting range

Encoders	
Resolution	1000

### Mechanical data

Max. permissible rpm / mech. [1/min]	12000
Starting torque [Ncm]	< 1 (20 °C)
Max. shaft load (at the shaft end) [N]	axial 10; radial 20
Shaft, material [mm]	Ø 10, steel (1.4104)
Vibration resistance	30 g
Shock resistance	200 g
Housing materials	aluminum
Weight [kg]	0.729



## RV6138

RV-1000-I24/L6

Environment	
Max. relative air humidity	[%] max. 98
Ambient temperature	[°C] -40...100, -40 °C for firmly laid cable
Protection	IP 64; IP 67 (housing); IP 64 (shaft)
Tests / approvals	
MTTF	[Years] 190
Electrical connection	
Connection	PUR cable / 6 m; radial, can also be used axially
Max. cable length	[m] 300
Wiring	
brown:	A
green:	A (inv.)
grey:	B
pink:	B (inv.)
red:	0 index
black:	0 index (inv.)
blue:	L+ (sensor)
white:	0V (sensor)
brown/green:	L+ (Up)
white/green:	0V (Un)
lilac:	error (inv.)
screen:	housing
Remarks	
Pack quantity	[piece] 1

ifm efector, inc. • 1100 Atwater Drive • Malvern • PA 19355 — We reserve the right to make technical alterations without prior notice. — US — RV6138 — 01.09.2010

**Article discontinued as of 31.March 2016**