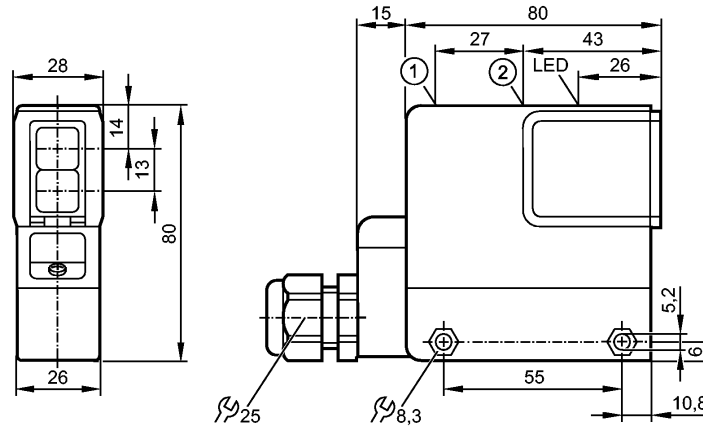


**no longer available - archive entry**

**Alternative article: OS5013**

**When selecting an alternative article and accessories please note that technical data may differ!**



- 1: potentiometer timer
- 2: potentiometer sensitivity

Receiver in upper lens



**Product characteristics**

Through-beam sensor
Rectangular, plastics
Terminals
Receiver
Sensing range 20m
adjustable

**Electrical data**

Electrical design	DC PNP
Operating voltage [V]	10...55 DC
Current consumption [mA]	20 (24 V)
Type of light	Infrared light 880 nm
Protection class	II
Reverse polarity protection	yes

**Outputs**

Output function	light-on / dark-on programmable
Current rating [mA]	250
Short-circuit protection	yes (non-latching)
Overload protection	yes
Switching frequency [Hz]	100
Timer [s]	0.01...5

**Monitoring range**

Sensing range [m]	20
-------------------	----

**Environment**

Ambient temperature [°C]	-25...80
Protection	IP 65

**Tests / approvals**

**OS5022**

OSE-FPKG/T

Photoelectric sensors

EMC	EN 60947-5-2 EN 55011:	class B
MTTF	[Years]	463

**Mechanical data**

Housing materials	modified PPO
Lens material	glass
Weight	[kg] 0.276

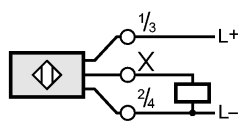
**Displays / operating elements**

Output status indication	LED	yellow
--------------------------	-----	--------

**Electrical connection**

Connection	terminals up to 1.5 mm <sup>2</sup> ; cable diameter 5...10 mm, cable gland M20 x 1.5
------------	---

**Wiring**



**Accessories**

Accessories (included)	Angle bracket; E20210; screwdriver
------------------------	------------------------------------

**Remarks**

Pack quantity	[piece]	1
---------------	---------	---

ifm efector, inc. • 1100 Atwater Drive • Malvern • PA 19355 — We reserve the right to make technical alterations without prior notice. — US — OS5022 — 21.10.2010

**no longer available - archive entry**

**Alternative article: OS5013**

**When selecting an alternative article and accessories please note that technical data may differ!**