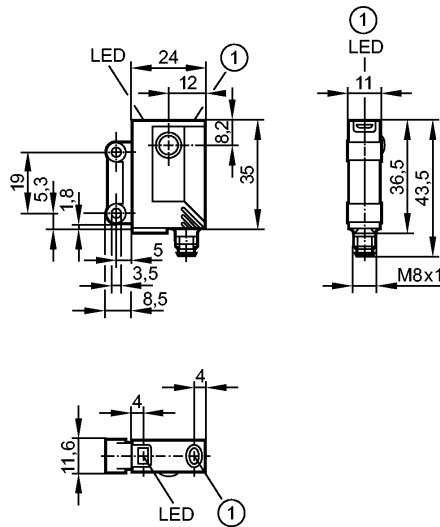


OJ5109

OJE-FPKG/FO/AS

Photoelectric sensors



1: pushbutton



Product characteristics

Through-beam sensor

Rectangular, plastics

Quick disconnect

Electronic lock

External teach function

Front sensing

Receiver

Sensing range 10m

adjustable

Electrical data

Electrical design		DC PNP
Operating voltage	[V]	10...30 DC
Current consumption	[mA]	< 12
Type of light		red light 660 nm
Protection class		III
Reverse polarity protection		yes

Outputs

Output function		light-on / dark-on programmable
Voltage drop	[V]	< 2.5
Current rating	[mA]	200
Short-circuit protection		yes (non-latching)
Overload protection		yes
Switching frequency	[Hz]	1200

Monitoring range

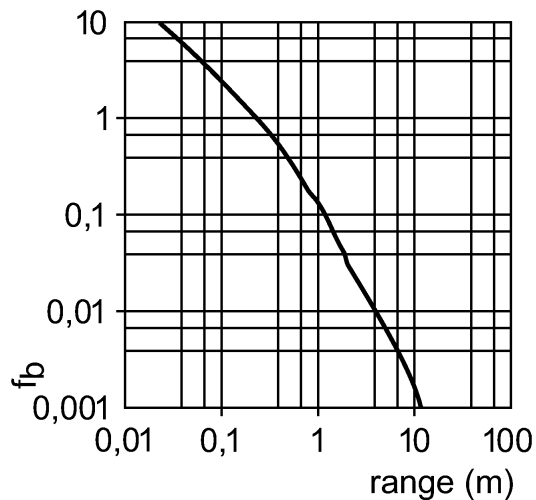
Sensing range	[m]	10
---------------	-----	----

Excess gain graphs

OJ5109

OJE-FPKG/FO/AS

Photoelectric sensors



Environment

Ambient temperature	[°C]	-25...60
Protection		IP 67

Tests / approvals

EMC		EN 60947-5-2
MTTF	[Years]	968

Mechanical data

Housing materials	housing: ABS; fixture: diecast zinc; LED window: SEPS; pushbutton: SEPS	
Lens material	glass	
Weight	[kg]	0.041

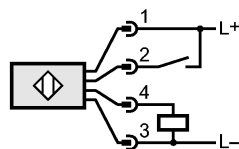
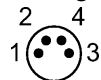
Displays / operating elements

Output status indication	LED	yellow
Power	LED	green
Function display	LED	red

Electrical connection

Connection	M8 connector	
------------	--------------	--

Wiring



2: Teach

Accessories

Accessories (included)	Basic clip; E20964; 2 mounting screws; M3 x 16; 2 spring washers; 2 nuts	
------------------------	--	--

Remarks

Remarks	cULus - Class 2 source required	
---------	---------------------------------	--

Pack quantity	[piece]	1
---------------	---------	---