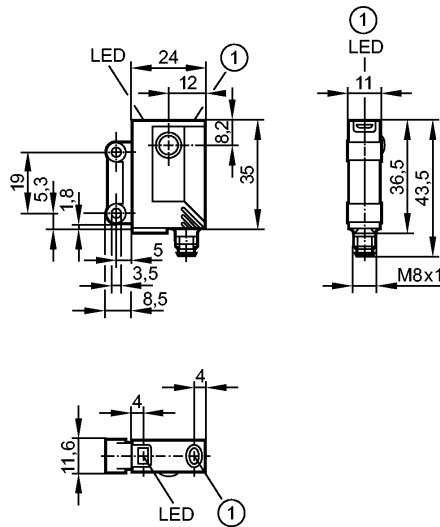


**OJ5108**

OJS-OOKG/FO/AS

Photoelectric sensors



1: Pushbutton without function



Product characteristics		
Through-beam sensor		
Rectangular, plastics		
Quick disconnect		
Front sensing		
Transmitter		
Sensing range 10m		
Electrical data		
Electrical design		DC
Operating voltage	[V]	10...30 DC
Current consumption	[mA]	< 19
Type of light		red light 660 nm
Protection class		III
Reverse polarity protection		yes
Outputs		
Overload protection		yes
Monitoring range		
Sensing range	[m]	10
Light spot diameter	[mm]	1000 ( at maximum range )
Environment		
Ambient temperature	[°C]	-25...60
Protection		IP 67
Tests / approvals		
EMC		EN 60947-5-2
MTTF	[Years]	1773
Mechanical data		
Housing materials		housing: ABS; fixture: diecast zinc; LED window: SEPS; pushbutton: SEPS
Lens material		glass
Weight	[kg]	0.04

**OJ5108**

OJS-OOKG/FO/AS

Photoelectric sensors

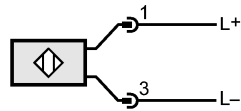
**Displays / operating elements**

Power LED green

**Electrical connection**

Connection M8 connector

**Wiring**



**Accessories**

Accessories (included) Basic clip; E20964; 2 mounting screws; M3 x 16; 2 spring washers; 2 nuts

**Remarks**

Remarks cULus - Class 2 source required

Pack quantity [piece] 1