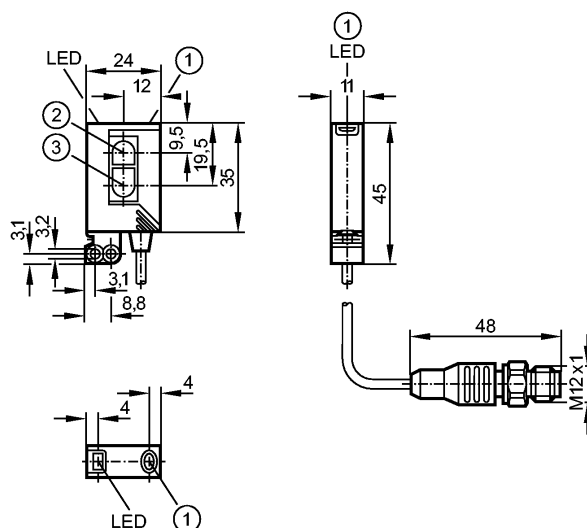


no longer available - archive entry

Alternative article: OJ5068

When selecting an alternative article and accessories please note that technical data may differ!



- 1: pushbutton
- 2: Receiver
- 3: Transmitter



Product characteristics

Diffuse reflection sensor

Rectangular, plastics

Cable with connector

Electronic lock

External teach function

Front sensing

Background suppression

Range 15...400mm (Range referred to white paper 200 x 200 mm, 90 % remission)

adjustable

Electrical data

Electrical design	DC PNP
Operating voltage [V]	10...30 DC
Current consumption [mA]	25
Type of light	red light 660 nm
Protection class	III
Reverse polarity protection	yes

Outputs

Output function	light-on / dark-on programmable
Voltage drop [V]	< 2.5
Current rating [mA]	200
Short-circuit protection	yes (non-latching)
Overload protection	yes
Switching frequency [Hz]	1000

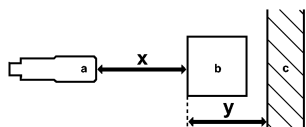
OJ5089

OJH-FPKG/FO/1M/US

Photoelectric sensors

Monitoring range

Range	[mm]	15...400 (Range referred to white paper 200 x 200 mm, 90 % remission)
Light spot diameter	[mm]	< 18 (Range 150 mm)

Background suppression chart


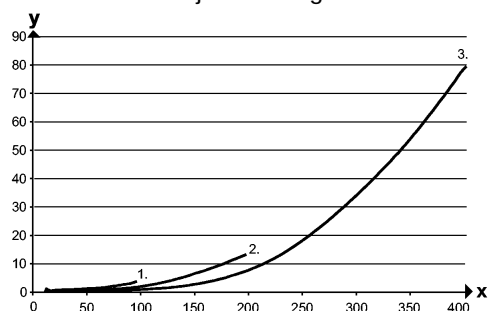
a: sensor

b: object

c: background

x: distance sensor / object

y: min. distance object / background



Values in [mm]

1 = object black (6 % remission), background white (90 % remission)

2 = object gray (18 % remission), background white (90 % remission)

3 = object white (90 % remission), background white (90 % remission)

Environment

Ambient temperature	[°C]	-25...60
Protection		IP 67

Tests / approvals

EMC		EN 60947-5-2
MTTF	[Years]	556

Mechanical data

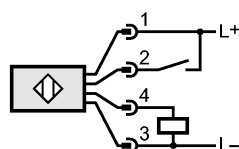
Housing materials	housing: ABS; fixture: diecast zinc; LED window: SEPS; pushbutton: SEPS; connector body: PUR; connector thread: brass	
Lens material		PMMA
Weight	[kg]	0.064

Displays / operating elements

Output status indication	LED	yellow
Power	LED	green

Electrical connection

Connection	PUR cable / 1 m; gold-plated contacts, with M12 connector	
------------	---	--

Wiring




OJ5089

OJH-FPKG/FO/1M/US

Photoelectric sensors

Accessories	
Accessories (included)	Basic clip; E20964; 2 mounting screws; M3 x 16; 2 spring washers; 2 nuts
Remarks	
Remarks	cULus - Class 2 source required
Pack quantity	[piece] 1

ifm efector, inc. • 1100 Atwater Drive • Malvern • PA 19355 — We reserve the right to make technical alterations without prior notice. — US — OJ5089 — 25.05.2011

no longer available - archive entry

Alternative article: OJ5068

When selecting an alternative article and accessories please note that technical data may differ!