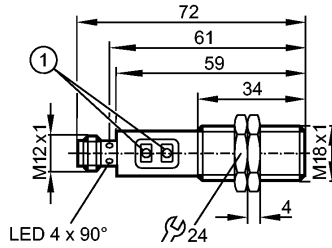


OGH500

OGH-FPKG/US100

Photoelectric sensors



1: Programming buttons



Product characteristics

Diffuse reflection sensor

Threaded type

M18 x 1

Quick disconnect

Background suppression

Range 15...300mm (Range referred to white paper 200 x 200 mm, 90 % remission)

adjustable

Electrical data

| | |
|-----------------------------|------------------|
| Electrical design | DC PNP |
| Operating voltage [V] | 10...36 DC |
| Current consumption [mA] | 25 |
| Type of light | red light 624 nm |
| Protection class | II |
| Reverse polarity protection | yes |

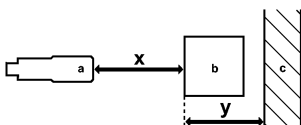
Outputs

| | |
|--------------------------|--|
| Output function | light-on / dark-on programmable via pushbutton |
| Factory setting | light-on mode |
| Voltage drop [V] | < 2.5 |
| Current rating [mA] | 150; 200 (...60 °C) |
| Short-circuit protection | yes (non-latching) |
| Overload protection | yes |
| Switching frequency [Hz] | 1000 |

Monitoring range

| | |
|---------------------------------|---|
| Range [mm] | 15...300 (Range referred to white paper 200 x 200 mm, 90 % remission) |
| Range [mm] | 15...300 |
| - Object white (90 % remission) | 15...300 |
| - Object grey (18 % remission) | 15...290 |
| - Object black (6 % remission) | 15...190 |
| Light spot diameter [mm] | 25 (at maximum range) |

Background suppression chart



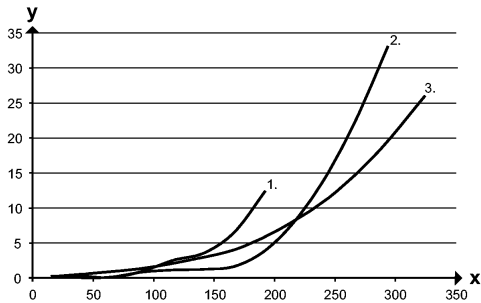
a: sensor
b: object

OGH500

OGH-FPKG/US100

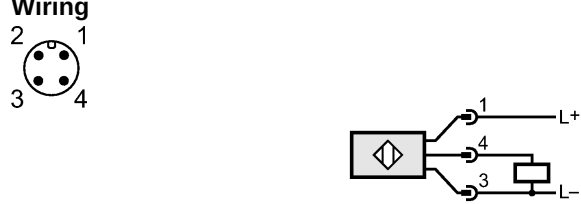
Photoelectric sensors

c: background
 x: distance sensor / object
 y: min. distance object / background



Values in [mm]

- 1 = object black (6 % remission), background white (90 % remission)
- 2 = object gray (18 % remission), background white (90 % remission)
- 3 = object white (90 % remission), background white (90 % remission)

| Environment | |
|---|--|
| Ambient temperature | [°C] -25...80 |
| Protection | IP 67 |
| Tests / approvals | |
| EMC | EN 60947-5-2 |
| MTTF | [Years] 362 |
| Mechanical data | |
| Housing materials | stainless steel 316L / 1.4404; PA; LCP; EPDM; TPU (urethane) |
| Lens material | PMMA |
| Weight | [kg] 0.063 |
| Displays / operating elements | |
| Output status indication | LED yellow |
| Electrical connection | |
| Connection | M12 connector |
| Wiring | |
|  | |
| Accessories | |
| Accessories (included) | 2 lock nuts |
| Remarks | |
| Remarks | cULus - Class 2 source required |
| Pack quantity | [piece] 1 |