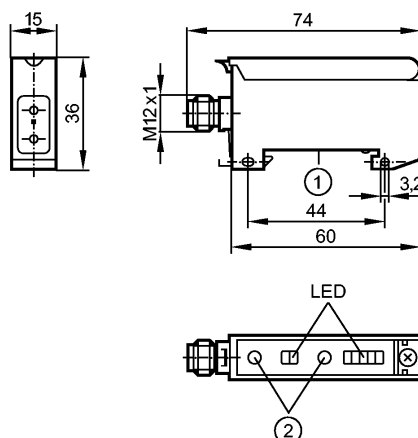


OBF500

OBF-FAKG/T/US

Photoelectric sensors



1: Mounting on DIN rail

2: setting pushbuttons



Product characteristics

Fiber-optic amplifier

Rectangular, plastics

Quick disconnect

For fiber optics with plastic sheath

Series FE/FT-11

Function check output

Automatic detection PNP/NPN

Sensing range 0...2000mm (Through-beam sensor)

Range 0...100mm (Diffuse reflection sensor)

adjustable

Electrical data

Electrical design	DC PNP/NPN
Operating voltage [V]	10...30 DC
Current consumption [mA]	< 50
Type of light	red light 630 nm
Protection class	III
Reverse polarity protection	yes

Outputs

Output function	light-on / dark-on programmable
Voltage drop	
- Switching output [V]	< 2.5
- Function check output [V]	< 2.5
Current rating	
- Switching output [mA]	100
- Function check output [mA]	10
Short-circuit protection	yes (non-latching)
Overload protection	yes
Switching frequency [Hz]	3000
Timer [s]	0.001...0.09

Monitoring range

OBF500

OBF-FAKG/T/US

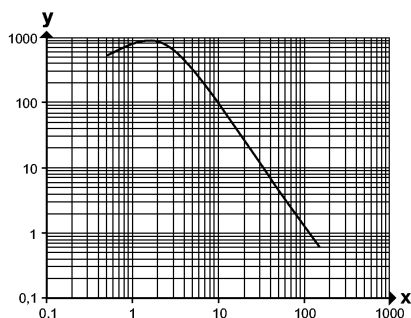
Photoelectric sensors

Sensing range	[m]	0...2 (Through-beam sensor)
Range	[mm]	0...100 (Diffuse reflection sensor)

Excess gain graphs

x: distance in [mm]

y: excess gain factor



Environment

Ambient temperature	[°C]	-25...60
Protection		IP 65

Tests / approvals

EMC		EN 60947-5-2
MTTF	[Years]	806

Mechanical data

Housing materials		modified PPE
Weight	[kg]	0.067

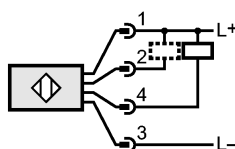
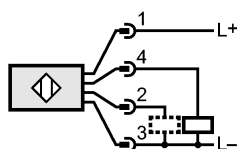
Displays / operating elements

Output status indication	LED	yellow
Power	LED	green
Unsafe zone	LED	red
Excess gain	LED	4 x green

Electrical connection

Connection		M12 connector
------------	--	---------------

Wiring



2 : function check

Remarks

Remarks	<p>When through-beam fibre optics are connected light-on mode means the output function "NC" and when diffuse reflection fibre optics are connected the output function "NO".</p> <p>When through-beam fibre optics are connected dark-on mode means the output function "NO" and when diffuse reflection fibre optics are connected the output function "NC"</p> <p>cULus - Class 2 source required</p>
---------	--

Pack quantity	[piece]	1
---------------	---------	---