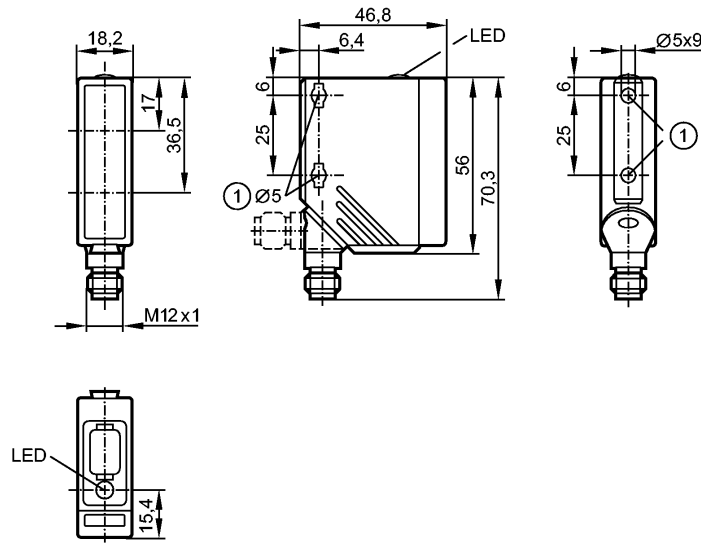


**O5P202**

O5P-CPKG/US100

Photoelectric sensors



1: When a M5 mounting screw is used, the max. tightening torque is 2 Nm.

Receiver in upper lens, transmitter in lower lens



**Product characteristics**

Retro-reflective sensor	
Rectangular, plastics	
Quick disconnect	
Polarization filter	
Sensing range 0.1...7m (Prismatic reflector Ø 80 (E20005))	

**Electrical data**

Electrical design		DC PNP
Operating voltage	[V]	10...36 DC
Current consumption	[mA]	20
Type of light		red light 624 nm
Protection class		II
Reverse polarity protection		yes

**Outputs**

Output function		complementary
Voltage drop	[V]	< 2.5
Current rating	[mA]	200
Short-circuit protection		yes (non-latching)
Overload protection		yes
Switching frequency	[Hz]	1000

**Monitoring range**

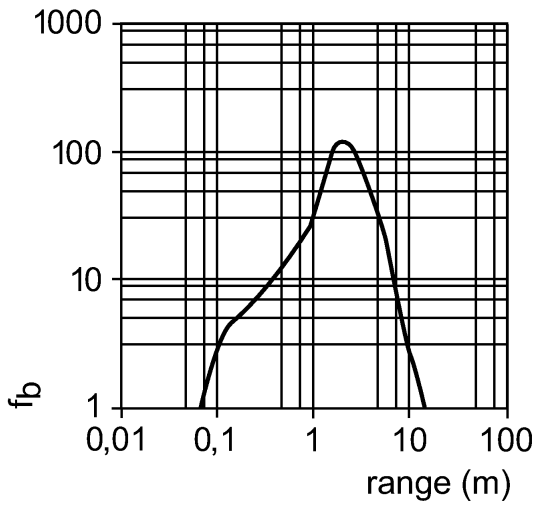
Sensing range	[m]	0.1...7 (Prismatic reflector Ø 80 (E20005))	
Range referred to prismatic reflector	[m]	Ø 80 mm	0.1...7
		50 x 50 mm	0.1...7
Light spot diameter	[mm]	175 ( at maximum range )	

**Excess gain graphs**

## O5P202

O5P-CPKG/US100

Photoelectric sensors



### Environment

Ambient temperature	[°C]	-25...60
Protection		IP 67

### Tests / approvals

EMC		EN 60947-5-2
MTTF	[Years]	456

### Mechanical data

Housing materials	housing: PA; Front framework: high-grade stainless steel; operator interface: TPE	
Lens material	PMMA	
Weight	[kg]	0.062

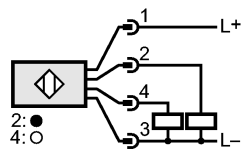
### Displays / operating elements

Output status indication	LED	yellow
--------------------------	-----	--------

### Electrical connection

Connection		M12 connector
------------	--	---------------

### Wiring



### Remarks

Pack quantity	[piece]	1
---------------	---------	---