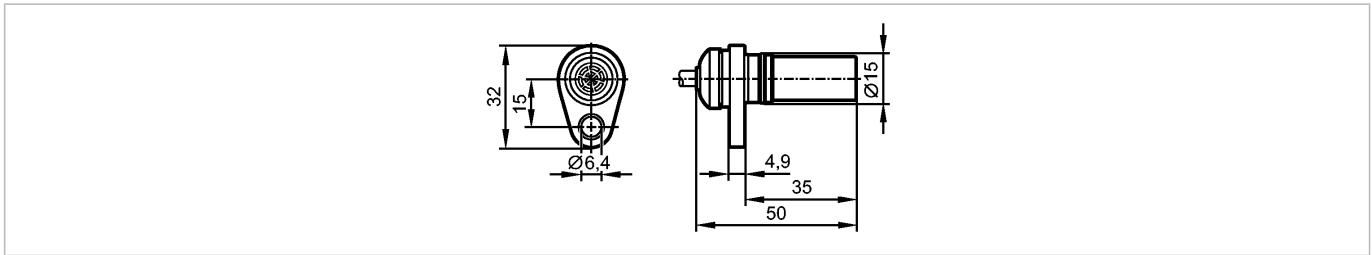


MX5017

MXD41.7 ANOG/H/2M/ZH

Rotational speed sensors



Product characteristics

Rotational speed sensor
Plastic housing
Cable
2-channel
Sensing range 1.7 mm; *)
Toothed wheel module [mm]: 1.25

Electrical data

Electrical design	DC NPN
Operating voltage [V]	7...30
Nominal voltage [V]	15
Current consumption [mA]	< 30
Protection class	III
Reverse polarity protection	no

Outputs

Current rating [mA]	< 50
Switching frequency [Hz]	1...15000

Monitoring range

Sensing range [mm]	1.7, *)
Operating distance [mm]	1

Environment

Ambient temperature [°C]	-32...140
Protection	IP 65 / IP 68 / IP 69K

Tests / approvals

EMC	EN 61000-4-2 EN 61000-4-3 EN 61000-4-4 EN 61000-4-6 EN 61000-4-8:	4 kV CD / 8 kV AD 10 V/m 2 kV 10 V 30 A/m
Shock resistance	DIN EN 60068-2-27	30 g (11 ms half sine; 3 shocks in each direction along the three coordinate axes)
Salt spray test	EN 60068/2-11	96 h 5 % NaCl at 25 °C

Mechanical data

Housing materials	socket: brass; housing: PA; O-ring: FPM	
Tightening torque [Nm]	7	
Toothed wheel module [mm]		1.25
Weight [kg]		0.018

Electrical connection

MX5017

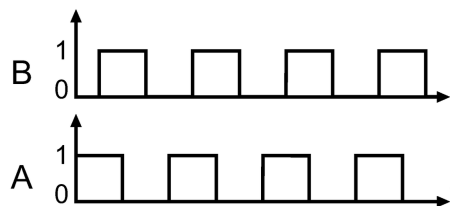
MXD41.7 ANOG/H/2M/ZH

Rotational speed sensors

Connection

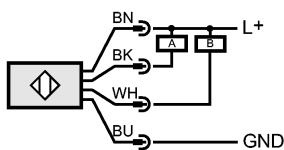
PUR cable / 2 m; 4 x 0.34 mm²

Switching signals



phase shift 90° +/- 20° *)
mark-to-space ratio 50 % +/- 10 %

Wiring



A: Pulse output

B: pulse output (the pulse sequence corresponds to the damping frequency)

Remarks

Pack quantity

[piece]

1