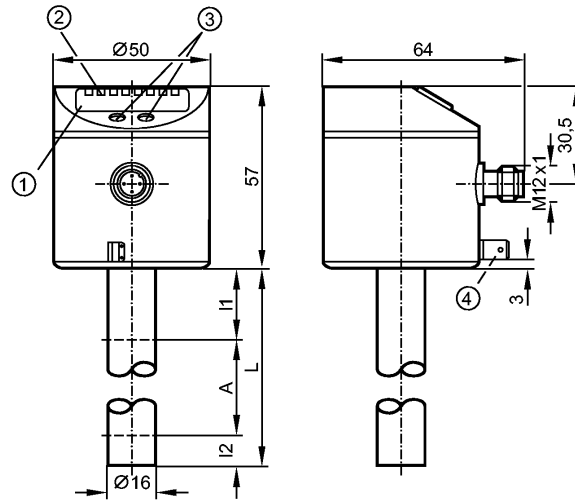


LK3123

LK0472B-B-00KLPKG/US

Level sensors



- 1: 4-digit alphanumeric display
- 2: status LEDs
- 3: Programming buttons
- 4: Housing connection (flat-pin connector 6.3 mm following DIN 46244)



Product characteristics

Electronic level sensor

Quick disconnect

Probe length: L = 472 mm

1 analog output (OUT2)
1 overflow output (OUT-OP)

4-digit alphanumeric display

Application

Application	Hydrous coolants, oils, water, media similar to water
Cannot be used for:	extremely conductive and adhering media, granulates and bulk materials, acids and alkalis, food and electroplating applications
Dielectric constant medium	> 2
Medium temperature oil	
- Continuous [°C]	0...70
- Short time [°C]	0...90
Medium temperature water and hydrous media [°C]	0...35 (LK3123 + E43101: 0...60) **)
Medium temperature coolant emulsions [°C]	0...35 (LK3123 + E43101: 0...60) **)
Maximum speed of the change of level [mm/s]	200

Electrical data

Electrical design	DC PNP
Operating voltage [V]	18...30 DC
Current consumption [mA]	< 60
Protection class	III
Reverse polarity protection	yes

Outputs

Output	1 analog output (OUT2) 1 overflow output (OUT-OP)
--------	--

LK3123

LK0472B-B-00KLPKG/US

Level sensors

Output function	1 x analog 4...20 mA / 0...10 V (OUT2); 1 x normally open / closed programmable (OUT-OP)	
Current rating [mA]	200	
Voltage drop [V]	< 2.5	
Short-circuit protection	thermal, pulsed	
Overload protection	yes	
Analog output	I: 4...20 mA / U: 0...10 V	
Max. load [Ω]	I: max. 500 / U: min. 2000	
Measuring / setting range		
Probe length L [mm]	472	
Active range A [mm]	390	
Inactive range I1 / I2 [mm]	53 / 30	
Overflow switch point OP [mm]	139 - 163 - 188 - 212 - 236 - 261 - 285 - 310 - 334 - 358 - 383 - 407	
Hysteresis OP [mm]	3	
Accuracy / deviations		
Deviations (% of value of measuring range)		
Repeatability	± 2	
Characteristics deviation	± 2	
Offset error [mm]	± 8	
Measuring sensitivity	0.04 mA / mm 0.03 V / mm	
Resolution [mm]	4	
Zero signal [mA] / [V]	3.6...4.0 / 0...0.2	
Full signal [mA] / [V]	20...20.8 / 9.8...10.2	
Reaction times		
Power-on delay time [s]	3	
Software / programming		
Programming options	Current / voltage output; position of OP; OP adjustment; medium adjustment; offset; display unit	
Environment		
Ambient temperature [°C]	0...60	
Storage temperature [°C]	-25...80	
Maximum vessel pressure [bar]	0.5 (mounted with mounting accessories E43001 - E43007)	
Protection	IP 67	
Tests / approvals		
EMC	EN 61000-4-2 ESD:	4 kV CD / 8 kV AD
	EN 61000-4-3 HF radiated:	10 V/m
	EN 61000-4-4 Burst:	2 kV
	EN 61000-4-6 HF conducted:	10 V
Shock resistance	DIN EN 60068-2-29:	15 g (11 ms)
Vibration resistance	DIN EN 60068-2-6	5 g (10...2000 Hz)
MTTF [Years]	194	
Mechanical data		
Materials (wetted parts)	PP	
Housing materials	stainless steel (304S15); FKM; NBR; PBT; PC; PEI; PP; TPE / V	
Weight [kg]	0.402	

LK3123

LK0472B-B-00KLPKG/US

Level sensors

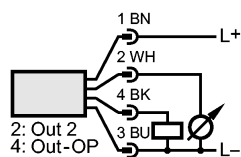
Displays / operating elements

Display	Display unit / status 2 x LED green Switching status 1 x LED yellow Measured values 4-digit alphanumeric display Programming 4-digit alphanumeric display
---------	--

Electrical connection

Connection	M12 connector (according to EN 61076-2-101); gold-plated contacts
------------	---

Wiring



Remarks

Remarks	cULus - Class 2 source required **) for water and hydrous media with temperatures > 35 °C install the unit into a climatic tube (order no. E43101)
---------	---

Pack quantity	[piece]	1
---------------	---------	---