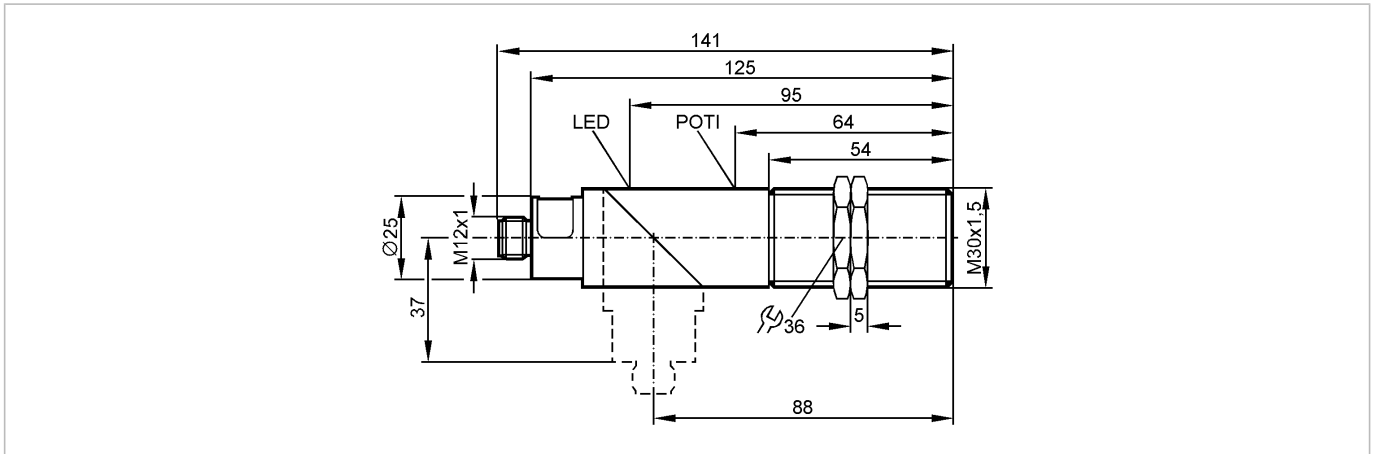


KI8505

KIE3015-FPKG/NI/US-100-DPX

Capacitive sensors



Product characteristics

- Capacitive sensor
- Plastic thread M30 x 1.5
- Quick disconnect
- Increased immunity to conducted radio frequency interference
- Sensing range 15 mm; [nf] non-flush mountable

Electrical data

Electrical design	DC PNP
Operating voltage [V]	10...55 DC
Current consumption [mA]	< 14 (24 V) / < 17.5 (55 V)
Protection class	II
Reverse polarity protection	yes

Outputs

Output function	normally open / closed programmable
Voltage drop [V]	< 2.5
Leakage current [mA]	< 4 (24 V) / < 7.5 (55 V)
Current rating [mA]	250
Short-circuit protection	yes (non-latching)
Overload protection	yes
Switching frequency [Hz]	40

Monitoring range

Sensing range [mm]	15
--------------------	----

Accuracy / deviations

Hysteresis [% of Sr]	1...15
Switch-point drift [% of Sr]	-15...15

Environment

Ambient temperature [°C]	-25...80
Protection	IP 65

Tests / approvals

EMC	IEC 60947-5-2:	2007
MTTF [Years]		743

Mechanical data

Mounting	non-flush mountable
----------	---------------------

KI8505

KIE3015-FPKG/NI/US-100-DPX

Capacitive sensors

Housing materials	PBT; end cap: polycarbonate
-------------------	-----------------------------

Weight	[kg] 0.134
--------	------------

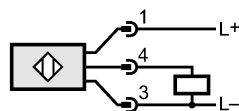
Displays / operating elements

Output status indication	LED yellow
--------------------------	------------

Electrical connection

Connection	M12 connector
------------	---------------

Wiring



Accessories

Accessories (included)	2 lock nuts; screwdriver
------------------------	--------------------------

Remarks

Pack quantity	[piece] 1
---------------	-----------