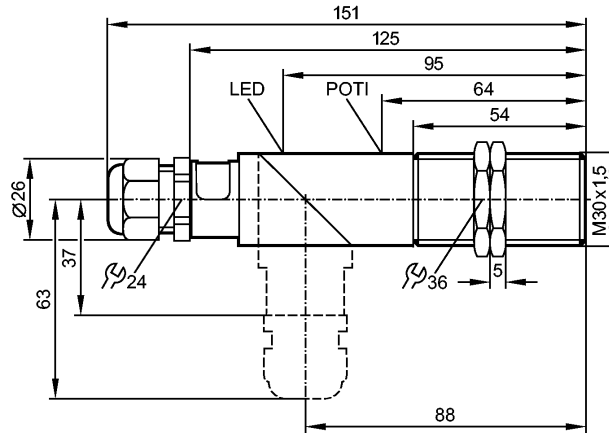


no longer available - archive entry

Alternative article: KI503A or KI505A

When selecting an alternative article and accessories please note that technical data may differ!



Product characteristics

Capacitive sensor
Plastic thread M30 x 1.5
Terminals
ATEX approval
Group II, category 3D
Increased immunity to conducted radio frequency interference
Sensing range 15 mm; adjustable; [nf] non-flush mountable

Electrical data

Electrical design	DC PNP
Operating voltage [V]	10...30 DC; 10...55 V DC when used outside the hazardous area
Current consumption [mA]	A: < 4 (24 V) / < 7.5 (55 V) / B: < 14 (24 V) / < 17.5 (55 V) A = not switched / B = switched
Protection class	II
Reverse polarity protection	yes

Outputs

Output function	normally open / closed programmable
Voltage drop [V]	< 2.5
Current rating [mA]	250
Short-circuit protection	yes (non-latching)
Overload protection	yes
Switching frequency [Hz]	10

Monitoring range

Sensing range [mm]	15, adjustable
Real sensing range (Sr) [mm]	15 ± 10 %

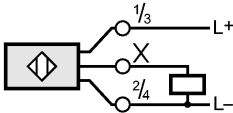
Accuracy / deviations

Correction factors	water = 1 / glass approx. 0.4 / ceramics approx. 0.2 / PVC approx. 0.2
Hysteresis [% of Sr]	1...15
Switch-point drift [% of Sr]	-15...15

KI5065

KIE3015-FPKG/NI/3D

Capacitive sensors

Environment	
Ambient temperature [°C]	-20...60, -25...80 °C when used outside the hazardous area
Protection	IP 54; IP 65 outside hazardous areas
Tests / approvals	
Marking of the unit	⊕ II 3D Ex tD A22 IP54 T80°C X
EMC	IEC 60947-5-2: 2007
MTTF [Years]	743
Mechanical data	
Mounting	non-flush mountable
Housing materials	PBT; PA
tightening torque for cable gland[Nm]	2.7; max. 3.5
Weight [kg]	0.16
Displays / operating elements	
Output status indication LED	yellow
Electrical connection	
Connection	terminals up to 2.5 mm ² ; cable diameter 5.5...13 mm, cable gland M20 x 1.5
Wiring	
	
Accessories	
Accessories (included)	2 lock nuts; screwdriver
Remarks	
Remarks	Special conditions for safe operation apply for use in hazardous areas. Observe the corresponding notes in the operating instructions (Ex protection related part).
Pack quantity [piece]	1

ifm efector, inc. • 1100 Atwater Drive • Malvern • PA 19355 — US — KI5065 — 11.12.2012

no longer available - archive entry

Alternative article: KI503A or KI505A

When selecting an alternative article and accessories please note that technical data may differ!