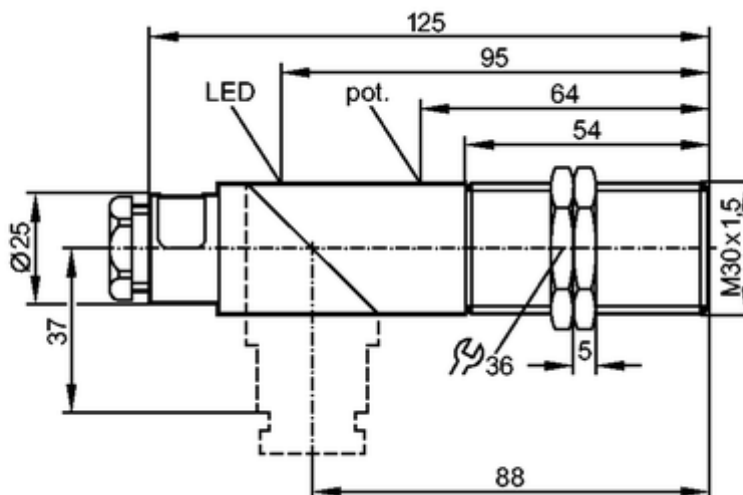


**KI5023**

KIE3015-FPKG/NI/55V

Capacitive sensors

**Product characteristics**

Capacitive sensor

Plastic thread M30 x 1.5

Terminals

Increased immunity to conducted radio frequency interference

Sensing range 15 mm; [nf] non-flush mountable

**Electrical data**

Electrical design	DC PNP
Operating voltage [V]	10...55 DC; "supply class 2" to cULus.
Current consumption [mA]	14 (24 V)
Protection class	II
Reverse polarity protection	yes

**Outputs**

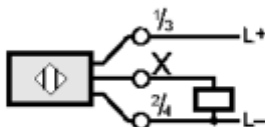
Output function	normally open / closed programmable
Voltage drop [V]	< 2.5
Current rating [mA]	250
Short-circuit protection	pulsed
Overload protection	yes
Switching frequency [Hz]	40

**Range**

Sensing range [mm]	15
Real sensing range (Sr) [mm]	15 ± 10 %
Operating distance [mm]	0...12.1

**Accuracy / deviations**

Correction factors	water = 1 / glass approx. 0.4 / ceramics approx. 0.2 / PVC approx. 0.2
Hysteresis [% of Sr]	1...15
Switch-point drift [% of Sr]	-15...15

Environment		
Ambient temperature [°C]	-25...70	
Protection	IP 65	
Tests / approvals		
EMC	IEC 60947-5-2:	2007
MTTF [Years]	743	
Mechanical data		
Mounting	non-flush mountable	
Housing materials	PBT; end cap: polycarbonate	
Weight [kg]	0.137	
Displays / operating elements		
Output status indication LED	yellow	
Electrical connection		
Connection	terminals up to 2.5 mm²; cable diameter 7...13 mm, cable gland M20 x 1.5	
Wiring		
		
Accessories		
Accessories (included)	2 lock nuts; screwdriver	
Remarks		
Pack quantity [piece]	1	

ifm electronic gmbh • Friedrichstraße 1 • 45128 Essen — We reserve the right to make technical alterations without prior notice. — GB — KI5023 — 12.07.2004