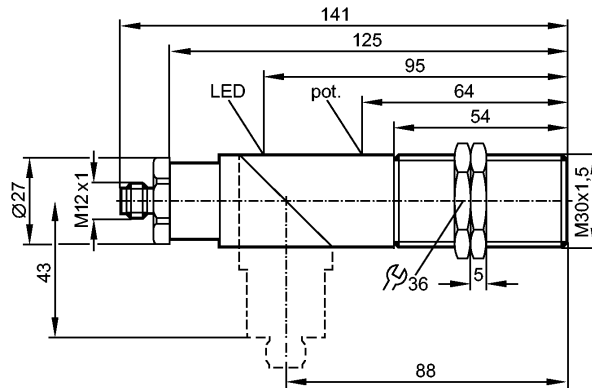


no longer available - archive entry

Alternative article: KI503A or KI505A

When selecting an alternative article and accessories please note that technical data may differ!



CE

Product characteristics

- Capacitive sensor
- Plastic thread M30 x 1.5
- Quick disconnect
- ATEX approval
- Group II, category 3D
- Increased immunity to conducted radio frequency interference
- Sensing range 15 mm; adjustable; [nf] non-flush mountable

Electrical data

Electrical design	DC PNP
Operating voltage [V]	10...30 DC *)
Current consumption [mA]	A: < 4 (24 V) / < 7.5 (55 V) / B: < 14 (24 V) / < 17.5 (55 V) ***)
Protection class	II
Reverse polarity protection	yes

Outputs

Output function	normally open / closed programmable
Voltage drop [V]	< 2.5
Current rating [mA]	250
Short-circuit protection	yes (non-latching)
Overload protection	yes
Switching frequency [Hz]	40

Monitoring range

Sensing range [mm]	15, adjustable
Real sensing range (Sr) [mm]	15 ± 10 %

Accuracy / deviations

Correction factors	water = 1 / glass approx. 0.4 / ceramics approx. 0.2 / PVC approx. 0.2
Hysteresis [% of Sr]	1...15
Switch-point drift [% of Sr]	-15...15

Environment

Ambient temperature [°C]	-20...60, -25...80 °C when used outside the hazardous area
--------------------------	--

KI501A

KIE3015-FPKG/NI/US/3D

Capacitive sensors

Protection	IP 54; IP 65 outside hazardous areas
------------	--------------------------------------

Tests / approvals

Marking of the unit	Ex II 3D Ex tD A22 IP54 T80°C X
---------------------	---------------------------------

EMC	IEC 60947-5-2: 2007
-----	---------------------

MTTF [Years]	743
--------------	-----

Mechanical data

Mounting	non-flush mountable
----------	---------------------

Housing materials	PBT; PC; aluminum
-------------------	-------------------

Weight [kg]	0.165
-------------	-------

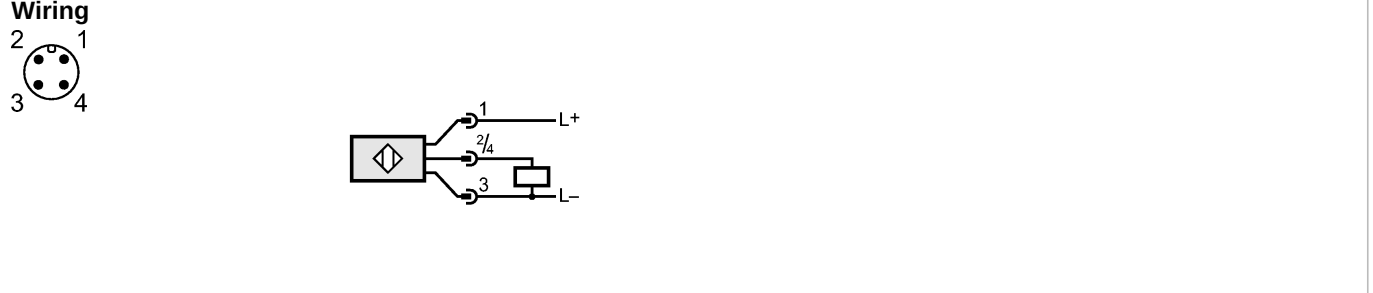
Displays / operating elements

Output status indication LED	yellow
------------------------------	--------

Electrical connection

Connection	M12 connector
------------	---------------

Wiring



The diagram shows a 4-pin M12 connector with terminals labeled 1, 2, 3, and 4. Terminal 1 is connected to L+. Terminal 2 and 4 are connected to a capacitor. Terminal 3 is connected to L-. Terminal 4 is also connected to the capacitor.

Accessories

Accessories (included)	2 lock nuts; screwdriver
------------------------	--------------------------

Remarks

Remarks	<p>*) 10...55 V DC when used outside the hazardous area ***) A = not switched / B = switched Special conditions for safe operation apply for use in hazardous areas. Observe the corresponding notes in the operating instructions (Ex protection related part).</p>
---------	---

Pack quantity [piece]	1
-----------------------	---

no longer available - archive entry

Alternative article: KI503A or KI505A

When selecting an alternative article and accessories please note that technical data may differ!