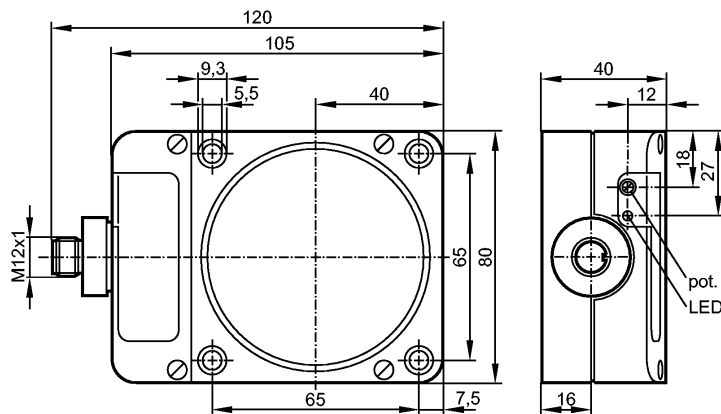


# KD5044

KDE3060-BPKG/NI/US-100-DPS

Capacitive sensors



## Product characteristics

Capacitive sensor

Rectangular, plastics

Quick disconnect

Sensing range 60 mm; [nf] non-flush mountable

## Electrical data

Electrical design	DC PNP
Operating voltage [V]	10...36 DC
Current consumption [mA]	5 (24 V)
Protection class	II
Reverse polarity protection	yes

## Outputs

Output function	normally open
Voltage drop [V]	< 2.5
Current rating [mA]	250
Short-circuit protection	yes (non-latching)
Overload protection	yes
Switching frequency [Hz]	10

## Monitoring range

Sensing range [mm]	60
Real sensing range (Sr) [mm]	60 ± 10 %
Operating distance [mm]	0...48.6

## Accuracy / deviations

Correction factors	water = 1 / glass approx. 0.4 / ceramics approx. 0.2 / PVC approx. 0.2
Hysteresis [% of Sr]	1...15
Switch-point drift [% of Sr]	-15...15

## Environment

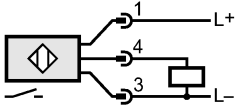
Ambient temperature [°C]	-25...80
Protection	IP 65

## Tests / approvals

EMC	IEC 60947-5-2:	2007
MTTF [Years]		537

KD5044

KDE3060-BPKG/NI/US-100-DPS

Mechanical data		
Mounting		non-flush mountable
Housing materials		modified PPO
Weight	[kg]	0.31
Displays / operating elements		
Output status indication	LED	yellow
Electrical connection		
Connection		M12 connector
<div><div><div>Wiring</div><div><div>21</div><div>34</div><div></div></div></div></div>		
Accessories		
Accessories (included)		screwdriver
Remarks		
Pack quantity	[piece]	1