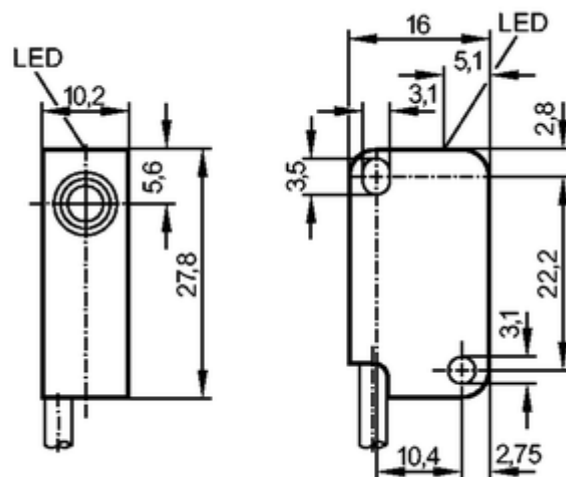


IS5068

IS-3002-BPKG/0.3M/AS-610

Inductive sensors

**Product characteristics**

Inductive sensor

Rectangular, plastics

Cable with connector

Sensing range 2 mm; [f] flush mountable

Electrical data

Electrical design	DC PNP
Operating voltage [V]	10...30 DC; cULus - Class 2 source required
Current consumption [mA]	< 15
Protection class	III
Reverse polarity protection	yes

Outputs

Output function	normally open
Voltage drop [V]	< 2.5
Leakage current [mA]	< 0.5
Current rating	
- Current rating (continuous) [mA]	200
- Current rating (peak) [mA]	200
Short-circuit protection	yes
Overload protection	yes
Switching frequency [Hz]	800

Monitoring range

Sensing range [mm]	2
Real sensing range (Sr) [mm]	2 ± 10 %
Operating distance [mm]	0...1.6
Safe switching off distance s(ar) [mm]	1.62

Accuracy / deviations

Correction factors	mild steel = 1 / stainless steel approx. 0.7 / brass approx. 0.4 / aluminium approx. 0.3 / copper approx. 0.2
Hysteresis [% of Sr]	1...15
Switch-point drift [% of Sr]	-10...10

Reaction times

Power-on delay time [ms]	0.1
--------------------------	-----

Environment

Ambient temperature [°C]	-25...80
Protection	IP 67

Tests / approvals

EMC	EN 61000-4-2	-- CD / 15 kV AD
	EN 61000-4-3	10 V/m
	EN 61000-4-4	2 kV CD / 15 kV AD
	EN 61000-4-5	0.5 kV / 15 kV AD
	EN 61000-4-6	10 V / 15 kV AD
	EN 55011:	class B / 15 kV AD
Vibration resistance	EN 60947-5-2	
Shock resistance	EN 60947-5-2	
MTTF [Years]	3004	

Mechanical data

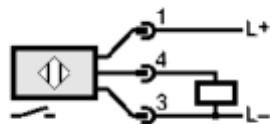
Mounting	flush mountable
Housing materials	housing: PBT; cover: PBT
Tightening torque [Nm]	≤ 0.5 (with washer)
Weight [kg]	0.019

Displays / operating elements

Output status indication LED	yellow
------------------------------	--------

Electrical connection

Connection	PUR cable / 6 m; 3 x 0.14 mm ² ; Ø 3.5 mm; with M8 connector
------------	---

Wiring**Remarks**

Pack quantity [piece]	1
-----------------------	---

ifm efector, inc. • 1100 Atwater Drive • Malvern • PA 19355 — We reserve the right to make technical alterations without prior notice. — US — IS5068 — 09.03.2016