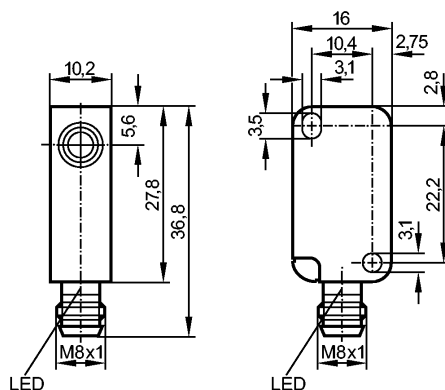


IS5044

IS-2002-FROG/AS-510-TRF RT

Inductive sensors


Product characteristics

Inductive sensor

Rectangular, plastics

Quick disconnect

Sensing range 2 mm; [f] flush mountable

Electrical data

Electrical design	DC PNP/NPN
Operating voltage [V]	5...36 DC; cULus - Class 2 source required
Protection class	III
Reverse polarity protection	no

Outputs

Output function	normally open / closed programmable
Voltage drop [V]	< 4.6
Minimum load current [mA]	4
Leakage current [mA]	< 0.8
Current rating [mA]	200
Short-circuit protection	no
Overload protection	no
Switching frequency [Hz]	2000

Monitoring range

Sensing range [mm]	2
Real sensing range (Sr) [mm]	2 ± 10 %
Operating distance [mm]	0...1.62

Accuracy / deviations

Correction factors	mild steel = 1 / stainless steel approx. 0.7 / brass approx. 0.4 / copper approx. 0.2 / aluminium approx. 0.3
Hysteresis [% of Sr]	1...15
Switch-point drift [% of Sr]	-10...20

Environment

Ambient temperature [°C]	-25...80
Protection	IP 67

Tests / approvals

EMC	EN 61000-4-2 ESD:	- CD / 15 kV AD
-----	-------------------	-----------------

IS5044

IS-2002-FROG/AS-510-TRF RT

Inductive sensors

	EN 61000-4-3 HF radiated: 10 V/m EN 61000-4-4 Burst: 2 kV EN 61000-4-5 Surge: 0.5 kV (line to line, Ri: 20hm) EN 61000-4-6 HF conducted: 10 V EN 55011: class B
Vibration resistance	(10...55 Hz) / 1 mm amplitude, vibration duration 5 min., 30 min. per axis with resonance or 55 Hz EN 60068-2-6:
Shock resistance	30 g (11 ms half sine; 3 shocks in each direction along the three coordinate axes) EN 60068-2-27 Ea
MTTF [Years]	3755

Mechanical data

Mounting	flush mountable
Housing materials	PBT
Tightening torque [Nm]	≤ 0.5 (with washer)
Weight [kg]	0.012

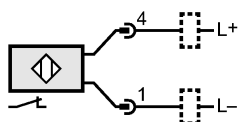
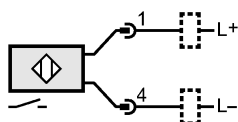
Displays / operating elements

Output status indication	LED	4 x red
--------------------------	-----	---------

Electrical connection

Connection	M8 connector
------------	--------------

Wiring



Remarks

Pack quantity	[piece]	1
---------------	---------	---