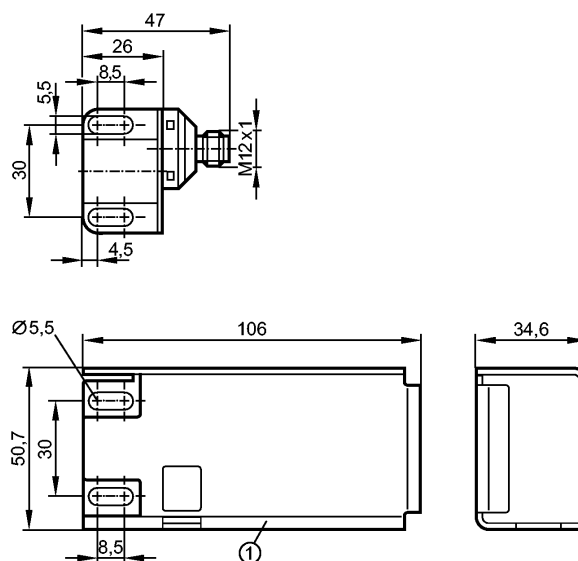


IN507A

IND3004DBPKG/US/3D/3G

Valve sensors



1: impact protection housing


Product characteristics

Inductive sensor

Rectangular, plastics

Quick disconnect

ATEX approval

Group II, category 3D/3G

Sensing range 4 mm

Electrical data

Electrical design		DC PNP
Operating voltage	[V]	10...30 DC
Current consumption	[mA]	< 15
Protection class		III
Reverse polarity protection		yes

Outputs

Output function		2 x normally open
Voltage drop	[V]	< 2.5
Current rating		
- Current rating (continuous)	[mA]	100
- Current rating (peak)	[mA]	100
Short-circuit protection		yes (non-latching)
Overload protection		yes
Switching frequency	[Hz]	1300

Monitoring range

Sensing range	[mm]	4
---------------	------	---

Accuracy / deviations

Correction factors		mild steel = 1 / stainless steel approx. 0.7 / brass approx. 0.5 / aluminium approx. 0.4 / copper approx. 0.3
Hysteresis	[% of Sr]	1...15
Operating distance target puck	[mm]	typ. 1.0

IN507A

IND3004DBPKG/US/3D/3G

Valve sensors

Switch-point drift	[% of Sr]	-10...10
--------------------	-----------	----------

Environment

Ambient temperature	[°C]	-20...60
Protection		IP 67

Tests / approvals

Marking of the unit		Ⓔ II 3D Ex tc IIIC T80°C Dc IP67 X *) Ⓔ II 3G Ex nA IIC T6 Gc X *)
EMC		EN 60947-5-2
MTTF	[Years]	1057

Mechanical data

Housing materials		housing: PBT; cover: PC; connector: stainless steel; impact protection housing: stainless steel
Weight	[kg]	0.329

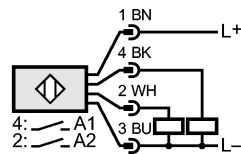
Displays / operating elements

Output status indication	LED	2 x yellow
--------------------------	-----	------------

Electrical connection

Connection		M12 connector
------------	--	---------------

Wiring



Accessories

Accessories (included)		impact protection housing; 2 socket head screws M5 x 35; Mounting plate
------------------------	--	---

Remarks

Remarks		*) only in conjunction with the impact protective housing
---------	--	---

Pack quantity	[piece]	1
---------------	---------	---