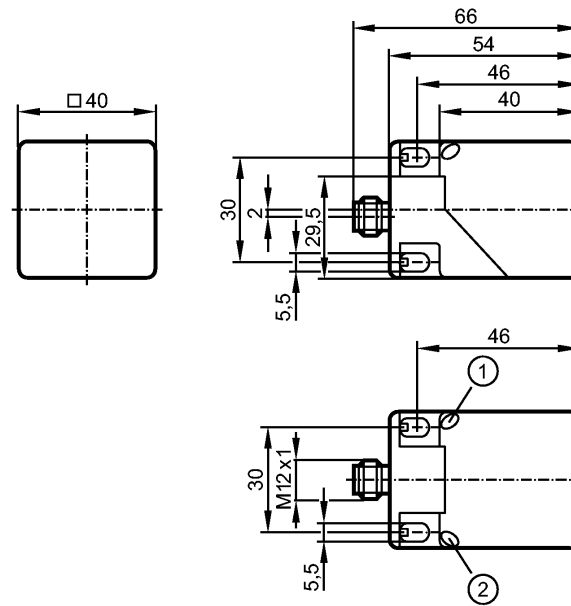


IM5126

IMC4040UCPKG/K1/SC/US-100-DPA

Inductive sensors



1: LED yellow
2: LED green



Product characteristics

Inductive sensor
Rectangular, plastics
Quick disconnect
Correction factor = 1
Weld field immune
5 positions of the sensing face selectable
Sensing range 40 mm; [nf] non-flush mountable

Electrical data

Electrical design	DC PNP
Operating voltage [V]	10...36 DC; cULus - Class 2 source required
Current consumption [mA]	< 20
Protection class	II
Reverse polarity protection	yes

Outputs

Output function	complementary
Voltage drop [V]	< 2.5
Leakage current [mA]	< 0.1
Current rating [mA]	200
Short-circuit protection	yes (non-latching)
Overload protection	yes
Switching frequency [Hz]	200

Monitoring range

Sensing range [mm]	40
Real sensing range (Sr) [mm]	40 ± 10 %
Operating distance [mm]	0...32.4

Accuracy / deviations

IM5126

IMC4040UCPKG/K1/SC/US-100-DPA

Inductive sensors

Correction factors	mild steel = 1 / stainless steel approx. 1 / brass approx. 1 / aluminium approx. 1 / copper approx. 1	
--------------------	---	--

Hysteresis	[% of Sr]	1...20
------------	-----------	--------

Switch-point drift	[% of Sr]	-10...10
--------------------	-----------	----------

Environment

Ambient temperature	[°C]	-25...70
---------------------	------	----------

Protection	IP 67	
------------	-------	--

Tests / approvals

EMC	EN 61000-4-2 ESD:	8 kV CD / 6 kV AD
	EN 61000-4-3 HF radiated:	10 V/m
	EN 61000-4-4 Burst:	2 kV
	EN 61000-4-5 Surge:	0.5 kV (line to line, Ri: 20hm)
	EN 61000-4-6 HF conducted:	10 V
	EN 55011:	class B

MTTF	[Years]	972
------	---------	-----

Mechanical data

Mounting	non-flush mountable	
----------	---------------------	--

Housing materials	housing: PA (polyamide) safe-coated; connector: stainless steel	
-------------------	---	--

Weight	[kg]	0.135
--------	------	-------

Displays / operating elements

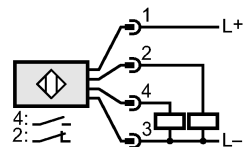
Output status indication	LED	yellow
--------------------------	-----	--------

Power	LED	green
-------	-----	-------

Electrical connection

Connection	M12 connector; rotatable, locking	
------------	-----------------------------------	--

Wiring



Remarks

Pack quantity	[piece]	1
---------------	---------	---