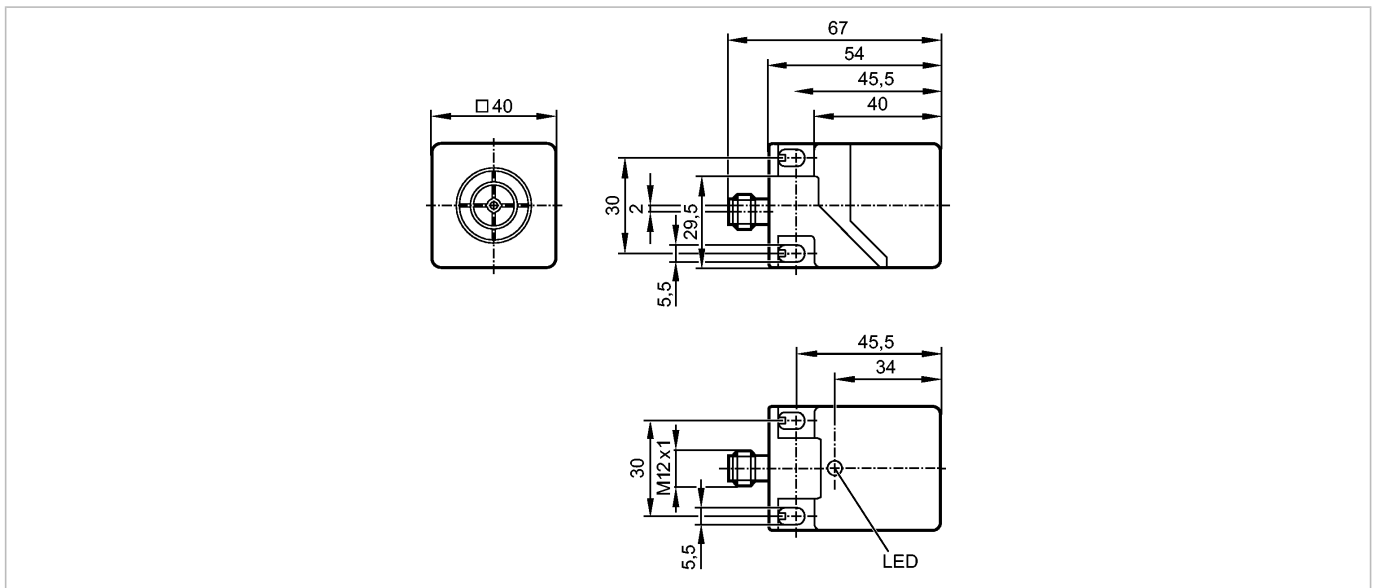


**IM511A**

IMC4040-CPKG/US/3D/3G

Inductive sensors



**Product characteristics**

Inductive sensor	
Rectangular, plastics	
M12 connector	
gold-plated contacts	
ATEX approval	
Group II, category 3D/3G	
Sensing range 40 mm; [nf] non-flush mountable	

**Electrical data**

Electrical design		DC PNP
Operating voltage [V]		10...30 DC
Current consumption [mA]		< 15
Protection class		III
Reverse polarity protection		yes

**Outputs**

Output function		normally open / closed
Voltage drop [V]		< 2.5
Leakage current [mA]		< 0.5
Current rating [mA]		200
Short-circuit proof		yes
Overload protection		yes
Switching frequency [Hz]		60

**Monitoring range**

Sensing range [mm]		40
Real sensing range (Sr) [mm]		40 ± 10 %
Operating distance [mm]		0...32.4

**Accuracy / deviations**

Correction factors		mild steel = 1 / stainless steel approx. 0.7 / brass approx. 0.4 / aluminium approx. 0.3 / copper approx. 0.2
Hysteresis [% of Sr]		1...20

**IM511A**

IMC4040-CPKG/US/3D/3G

**Inductive sensors**

Switch-point drift	[% of Sr]	-10...10
--------------------	-----------	----------

**Environment**

Ambient temperature	[°C]	-20...60
Protection		IP 65 / IP 67

**Tests / approvals**

Marking of the unit		Ⓔ II 3D Ex tc IIIC T95°C Dc X Ⓔ II 3G Ex nA IIC T4 Gc X
EMC		EN 60947-5-2                      2008-08
MTTF	[Years]	1259

**Mechanical data**

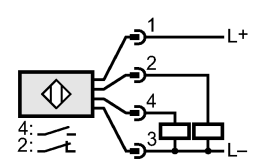
Mounting		non-flush mountable
Housing materials		PC; PA; TPE
Weight	[kg]	0.167

**Displays / operating elements**

Output status indication	LED	yellow
--------------------------	-----	--------

**Electrical connection**

**Wiring**



**Remarks**

Remarks	Recommendation: check the unit for reliable function after a short circuit. 5 positions of the active zone possible
---------	--

Pack quantity	[piece]	1
---------------	---------	---