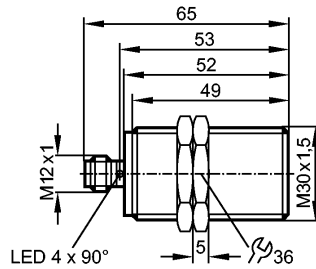


IIC218

IIC3010-BPKG/M/K1/US-104-DPS

Inductive sensors



Product characteristics

Inductive sensor
Metal thread M30 x 1.5
Quick disconnect
Weld field immune
Correction factor = 1
gold-plated contacts
Sensing range 10 mm; [f] flush mountable

Electrical data

Electrical design	DC PNP
Operating voltage [V]	10...30 DC; cULus - Class 2 source required
Current consumption [mA]	< 15
Protection class	II
Reverse polarity protection	yes

Outputs

Output function	normally open
Voltage drop [V]	< 2.5
Current rating [mA]	200
Short-circuit protection	yes (non-latching)
Overload protection	yes
Switching frequency [Hz]	1000

Monitoring range

Sensing range [mm]	10
Real sensing range (Sr) [mm]	10 ± 10 %
Operating distance [mm]	0...8.1

Accuracy / deviations

Correction factors	mild steel = 1 / stainless steel approx. 1 / brass approx. 1 / aluminium approx. 1 / copper approx. 1
Hysteresis [% of Sr]	1...15
Switch-point drift [% of Sr]	-10...10

Environment

Ambient temperature [°C]	-25...70
Protection	IP 68; "Coolant"

Tests / approvals

EMC	EN 61000-4-2 ESD: 4 kV CD / 8 kV AD
	EN 61000-4-3 HF radiated: 10 V/m
	EN 61000-4-4 Burst: 2 kV

IIC218

IIC3010-BPKG/M/K1/US-104-DPS

Inductive sensors

	EN 61000-4-5 Surge:	0.5 kV (line to line, Ri: 20hm)
	EN 61000-4-6 HF conducted:	10 V
	EN 55011:	class B
MTTF	[Years]	1912
UL approval number		A005

Mechanical data

Mounting		flush mountable
Housing materials		stainless steel (316L); active face: LCP
Weight	[kg]	0.125

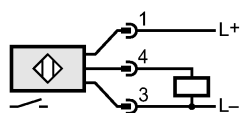
Displays / operating elements

Output status indication	LED	yellow (4 x 90°)
--------------------------	-----	------------------

Electrical connection

Connection		M12 connector; gold-plated contacts
------------	--	-------------------------------------

Wiring



Accessories

Accessories (included)		2 lock nuts
------------------------	--	-------------

Remarks

Pack quantity	[piece]	1
---------------	---------	---