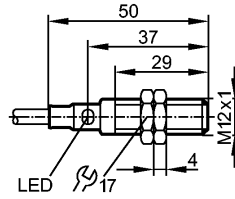


IFT206

IFB3004BBPKG/M/V4A/6M/WH

Inductive sensors



Product characteristics

Inductive sensor
Metal thread M12 x 1
Cable
Increased sensing range
Sensing range 4 mm; [f] flush mountable

Electrical data

Electrical design	DC PNP
Operating voltage [V]	10...36 DC
Current consumption [mA]	10 (24 V)
Protection class	II
Reverse polarity protection	yes

Outputs

Output function	normally open
Voltage drop [V]	< 2.5
Current rating [mA]	100
Short-circuit protection	pulsed
Overload protection	yes
Switching frequency [Hz]	800

Range

Sensing range [mm]	4
Operating distance [mm]	0...3.25

Accuracy / deviations

Correction factors	mild steel = 1 / stainless steel approx. 0.7 / brass approx. 0.5 / Al approx. 0.4 / Cu approx. 0.3
Hysteresis [% of Sr]	1...20

Environment

Ambient temperature [°C]	0...100
Protection	IP 68 / IP 69K; "COP"

Tests / approvals

EMC	EN 61000-4-2 ESD: 4 kV CD / 8 kV AD EN 61000-4-3 HF radiated: 10 V/m EN 61000-4-4 Burst: 2 kV EN 61000-4-5 Surge: 0.5 kV (line to line, Ri: 20hm) EN 61000-4-6 HF conducted: 10 V EN 55011: class B
-----	--

MTTF [Years]	1669
--------------	------

Mechanical data

Mounting	flush mountable
----------	-----------------

IFT206

IFB3004BBPKG/M/V4A/6M/WH

Inductive sensors

Housing materials	stainless steel (316L); active face: PEEK (polyether ether ketone)
-------------------	--

Weight [kg]	0.256
-------------	-------

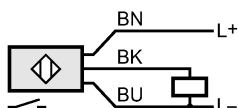
Displays / operating elements

Output status indication	LED	yellow
--------------------------	-----	--------

Electrical connection

Connection	PVC cable / 6 m; 3 x 0.34 mm ² ; Ø 4.9 mm
------------	--

Wiring



Accessories

Accessories (included)	2 lock nuts
------------------------	-------------

Remarks

Pack quantity [piece]	1
-----------------------	---