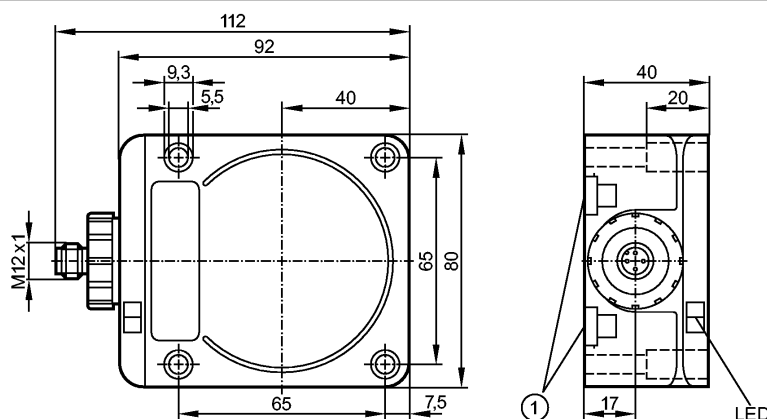


ID5058

IDC4050BCPKG/2LED/US-100-DPA

Inductive sensors


1: Mounting on DIN rail


Product characteristics

Inductive sensor

Rectangular, plastics

Connector

Sensing range 50 mm; [f] flush mountable

Electrical data

Electrical design		DC PNP
Operating voltage	[V]	10...36 DC
Current consumption	[mA]	20 (24 V)
Protection class		II
Reverse polarity protection		yes

Outputs

Output function		complementary
Voltage drop	[V]	< 2.5
Current rating	[mA]	250
Short-circuit protection		pulsed
Overload protection		yes
Switching frequency	[Hz]	70

Range

Sensing range	[mm]	50
Operating distance	[mm]	0...40.5

Accuracy / deviations

Correction factors		mild steel = 1 / stainless steel approx. 0.85 / brass approx. 0.48 / aluminium approx. 0.46 / copper approx. 0.38
Hysteresis	[% of Sr]	3...20
Switch-point drift	[% of Sr]	-15...15

Environment

Ambient temperature	[°C]	-25...70
Protection		IP 67

Tests / approvals

EMC		EN 60947-5-2
MTTF	[Years]	1162

Mechanical data

ID5058

IDC4050BCPKG/2LED/US-100-DPA

Inductive sensors

Mounting	flush mountable
Housing materials	PPE; Brass white bronze coated; diecast zinc
Installation	rail TH35 (to EN 60715)
Weight [kg]	0.423

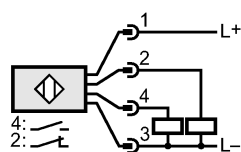
Displays / operating elements

Output status indication	LED	yellow
Operation	LED	green

Electrical connection

Connection	M12 connector
------------	---------------

Wiring



Accessories

Accessories (included)	sealing plug
------------------------	--------------

Remarks

Pack quantity	[piece]	1
---------------	---------	---