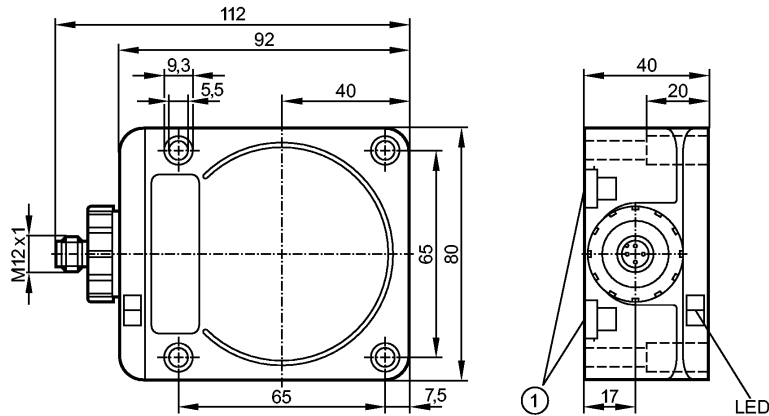


DTA300

DTSLF DCRWASUS01

Identification systems



1: Mounting on DIN rail



Product characteristics

Read/write head

Rectangular, plastics

with integrated AS-i slave profile 7.4

M12 connector

Application

Application

Detection of objects on conveying systems; suitable for travel speeds up to 0.5 m/s

Electrical design

AS-i

Electrical data

Operating voltage [V] 26.5...31.6 DC (AS-i) ¹⁾

Current consumption [mA] ≤ 65

Protection class III

operating frequency [kHz] 125

Monitoring range

Travel speed * [m/s] read: ≤ 0.5 (distance to the ID tag 40 mm)
write: only static

Distance to the ID tag * [mm] read: ≤ 80 (static)

Distance between read/read heads ** [mm] ≥ 280 side
≥ 400 front

Distance between read/write heads** [mm] ≥ 500 side / front

Measuring / setting range

value range 16 bits (15-bit ID value, 1-bit message)

Environment

Ambient temperature [°C] -20...60

Storage temperature [°C] -25...80

Protection IP 67

Tests / approvals

DTA300

DTSLF DCRWASUS01

Identification systems

Approval	Radio approvals Europe: 99/5/EC (R&TTE Directive) USA FCC ID: UN6DTS125AA Canada ID: 6799A-DTS125AA China ID: 2007DJ0582 Singapore: Registration Number S0655-07	
EMC	EN 50295	(1999-03)
Shock resistance	EN 60068-2-29:	40 g (6 ms)
	EN 60068-2-27:	50 (11 ms)
Vibration resistance	EN 60068-2-6:	20 g (10...55 Hz)

Safety classification

MTTF	[a]	422
------	-----	-----

AS-i classification

AS-i profile	7.4	
I/O configuration [hex]	7	
ID code [Hex]	4	
AS-i certificate	83401	

Mechanical data

Housing materials	housing: PPE; Metal parts: diecast zinc / brass nickel-plated	
Weight	[kg]	0.383

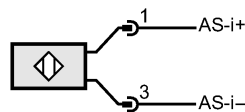
Displays / operating elements

Display	3 LED green: operating voltage yellow: tag read red: error AS-i data communication
---------	---

Electrical connection

Connection	M12 connector; rotatable
------------	--------------------------

Wiring



Remarks

Remarks	*) referred to the ID tag E80318 For the distances to other ID tags see the respective data sheet (E803xx) **) referred to the read/write head DTA300 and read head DTA301
---------	--

Pack quantity	[piece]	1
---------------	---------	---