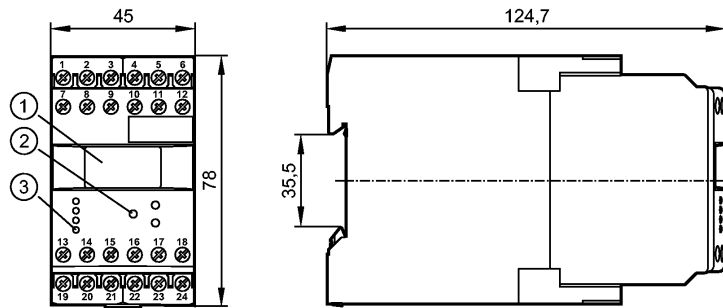


DR2505

MONITOR/FD-2 /110-240VAC/DC

Evaluation systems, power supplies



- 1: OLED display
- 2: Programming buttons
- 3: LEDs



Product characteristics

MONITOR

FD-2

Housing for DIN rail mounting

2 relay outputs

2 transistor outputs

programmable

Key function

Application

Application

pulse evaluation system with μ processor for direction monitoring with separate direction indication for "right" and "left"

Switching function

2 switching outputs for separate indication of direction; adjustable reset times for standstill monitoring

Electrical data

Nominal voltage [V] 110...240 AC (50...60 Hz) / 27 DC (typ. 24 DC)

Voltage tolerance [%] -20...+10

Power consumption [VA] 5 (3 W)

Sensor supply [V] 19.6...27.7 DC SELV, \leq 150 mA

Inputs

Inputs

pnp/npn; NAMUR (24 V)
 auxiliary supply: typ. 24 V DC / 15 mA; short-circuit protected
 threshold pnp: > 12 V on; < 5 V off
 threshold npn: > 15 V off; < 8 V on
 input frequency (max): 1 kHz (corresponds to min. pulse length / space 0.1 ms)

Outputs

Relay

Contact rating 6 A (250 V AC); B300, R300

Transistor

Transistor outputs pnp; external supply
 switching voltage/current: 24 V DC / max. 15 mA; short-circuit protected

Measuring / setting range

Adjustment range reset time: 0.0...1000 s

Accuracy / deviations

Measuring error [% of the final value] < 1

Environment



DR2505

MONITOR/FD-2 /110-240VAC/DC

Evaluation systems, power supplies

Ambient temperature	[°C]	-40...60
Storage temperature	[°C]	-40...85
Max. relative air humidity	[%]	80 (31°C), linearly decreasing to 50 % (40 °C)
Protection housing / terminals		IP 50 / IP 20

Tests / approvals

EMC	EN 61010	2011
	EMC 89/336/EEC	
	EN 61000-6-2	2005
	EN 61000-6-4	2007

Mechanical data

Housing materials		plastics
Weight	[kg]	0.363

Displays / operating elements

Input pulses	LED	yellow
Output status indication	LED	green (lights when the relay is energised / the transistor is closed)
Display		OLED display 128 x 64 dots luminous

Electrical connection

Connection		dual-chamber terminals 2 x 2.5 mm ² (2 x AWG 14)
------------	--	---

Wiring

- 1: DC Supply voltage (L-)
- 2: DC Supply voltage (L+)
- 3: supply transistor outputs (L+)
- 4: sensor signal 1 pnp
- 5: DC Sensor supply (L+)
- 6: DC Sensor supply (L-)
- 7: AC Supply voltage (L)
- 8: AC Supply voltage (N)
- 9: n.c.
- 10: sensor signal 1 npn
- 11: sensor signal 2 pnp
- 12: sensor signal 2 npn
- 13: Relay 1 (common)
- 14: Relay 1 (normally open)
- 15: Relay 1 (normally closed)
- 16: transistor output 1 pnp
- 17: Reset 1 pnp
- 18: Reset 2 pnp
- 19: Relay 2 (common)
- 20: Relay 2 (normally open)
- 21: Relay 2 (normally closed)
- 22: n.c.
- 23: n.c.
- 24: transistor output 2 pnp

Remarks

Remarks		overvoltage category II; degree of soiling 2
---------	--	--

Pack quantity	[piece]	1
---------------	---------	---