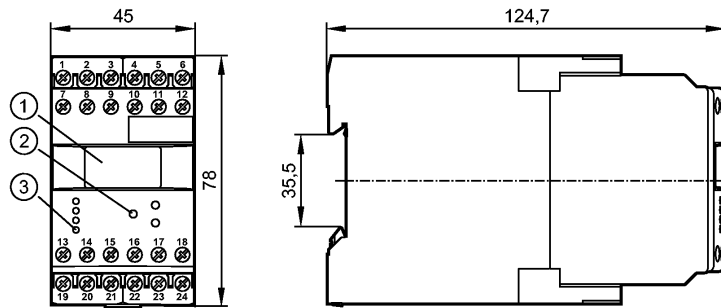


DR2503

MONITOR/FD-1 /110-240VAC/DC

Evaluation systems, power supplies



- 1: OLED display
- 2: Programming buttons
- 3: LEDs



Product characteristics

MONITOR

FD-1

Housing for DIN rail mounting

2 relay outputs

2 transistor outputs

programmable

Test function without external frequency

Key function

Application

Application	Impulse analysing system with microprocessor for indication of direction as well as frequency, number of revolutions and underspeed/overspeed
Switching function	1 switching output for indication of direction; 1 switching output for overspeed/underspeed and acceptable range

Electrical data

Nominal voltage	[V]	110...240 AC (50...60 Hz) / 27 DC (typ. 24 DC)
Voltage tolerance	[%]	-20...+10
Power consumption	[VA]	5 (3 W)
Sensor supply	[V]	19.6...27.7 DC SELV, ≤ 150 mA

Inputs

Inputs	<p>pnp/npn; NAMUR (24 V) auxiliary supply: typ. 24 V DC / 15 mA; short-circuit protected threshold pnp: > 12 V on; < 5 V off threshold npn: > 15 V off; < 8 V on input frequency (max): 1 kHz (corresponds to min. pulse length / space 0.1 ms)</p>
--------	---

Outputs

Relay	
Contact rating	6 A (250 V AC); B300, R300
Transistor	
Transistor outputs	<p>pnp; external supply switching voltage/current: 24 V DC / max. 15 mA; short-circuit protected</p>

Measuring / setting range

Adjustment range	<p>cycle time: 0.0...1000 s rotational speed (frequency): 1...60000 pulses/min (1...1000 Hz)</p>
------------------	---

Accuracy / deviations

Measuring error [% of the final value]	< 1
--	-----



DR2503

MONITOR/FD-1 /110-240VAC/DC

Evaluation systems, power supplies

Environment		
Ambient temperature	[°C]	-40...60
Storage temperature	[°C]	-40...85
Max. relative air humidity	[%]	80 (31°C), linearly decreasing to 50 % (40 °C)
Protection housing / terminals		IP 50 / IP 20
Tests / approvals		
EMC		EN 61010
		2011
		EMC 89/336/EEC
		2005
		EN 61000-6-2
		2007
		EN 61000-6-4
Mechanical data		
Housing materials		plastics
Weight	[kg]	0.367
Displays / operating elements		
Input pulses	LED	yellow
Output status indication	LED	green (lights when the relay is energised / the transistor is closed)
Display		OLED display 128 x 64 dots luminous
Electrical connection		
Connection		dual-chamber terminals 2 x 2.5 mm ² (2 x AWG 14)
Wiring		
1: DC Supply voltage (L-) 2: DC Supply voltage (L+) 3: supply transistor outputs (L+) 4: sensor signal 1 pnp 5: DC Sensor supply (L+) 6: DC Sensor supply (L-) 7: AC Supply voltage (L) 8: AC Supply voltage (N) 9: n.c. 10: sensor signal 1 npn 11: sensor signal 2 pnp 12: sensor signal 2 npn 13: Relay 1 (common) 14: Relay 1 (normally open) 15: Relay 1 (normally closed) 16: transistor output 1 pnp 17: Reset 1 pnp 18: Reset 2 pnp 19: Relay 2 (common) 20: Relay 2 (normally open) 21: Relay 2 (normally closed) 22: n.c. 23: n.c. 24: transistor output 2 pnp		
Remarks		
Remarks		overvoltage category II; degree of soiling 2
Pack quantity	[piece]	1